

MASDEU MINERS

Emic Automata

Emic Automata

By Mark Rickerby

© Mark Rickerby, 2017

This is a computer-generated book produced for NaNoGenMo 2017. The code is available under the terms of the MIT license.

The source material is a public domain corpus of English words collected from an original dataset by Infochimps.

<https://maetl.net>
<https://github.com/maetl/amic-automata>
<https://github.com/NaNoGenMo/2017>
<https://github.com/dwyl/english-words>

Preface

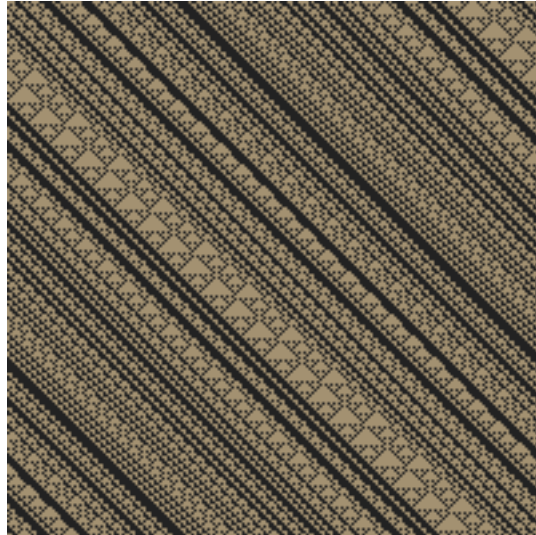
This book is generated using elementary cellular automata with two randomly selected units of text mapped to the binary states of each cell.

The starting automaton is seeded with a randomly selected list of states. This seed is used to generate a wall of text—a study of repetition and contrast which combines the universal pattern generated by the automaton with the particular visual density of the selected units of text.

The number of cells in each generation and the number of generations are dependent on the length of the selected units. For this to work, the selected units must be the exact same length and the output text must be set in a monospace font.

MASDEU MINERS

Rule 170



MASDEUMINERSMINERSMINERSMASDEUMASDEUMASDEUMINERSMASDEUMINERSMINERSMINERS
MINERSMASDEUMINERSMASDEUMASDEUMASDEUMINERSMINERSMINERSMASDEUMINERSMASDEU
MINERSMINERSMINERSMASDEUMASDEUMINERSMASDEUMINERSMASDEUMINERSMINERSMINERS
MINERSMINERSMASDEUMASDEUMINERSMINERSMINERSMINERSMINERSMASDEUMINERSMINERS
MINERSMASDEUMASDEUMINERSMASDEUMINERSMINERSMINERSMASDEUMINERSMASDEUMINERS
MASDEUMASDEUMINERSMINERSMINERSMASDEUMINERSMASDEUMINERSMINERSMINERSMASDEU

Colophon

Typefaces:

PT Serif by ParaType

PT Mono by ParaType

Tools:

Ruby 2.4 (<https://ruby-lang.org>)

Calyx (<https://calyx-rb.org>)

Prawn (<https://github.com/prawnpdf/prawn>)

PNG (<https://rubygems.org/gems/png>)