



# USER DOCUMENTATION

EasySave v3.0

## RÉSUMÉ

EasySave backup software user's guide for the 3.0 version.

## Group 4

System programming project

## Table of Contents

<b>Presentation</b> .....	<b>2</b>
<b>Menu</b> .....	<b>3</b>
<b>Manage save templates</b> .....	<b>4</b>
Create a save template .....	4
Delete a save template .....	5
Modify a save templates.....	5
<b>Execute save(s)</b> .....	<b>6</b>
Execute one template .....	6
Execute all templates.....	6
Actions on saves .....	7
<b>Parameters</b> .....	<b>8</b>
<b>Remote client interface</b> .....	Erreur ! Signet non défini.

# Presentation



Here is the brand-new version of EasySave, EasySave V3.0 !

EasySave is a software which allow you to preconfigure save templates and execute one or more when you want.

With this new version, you can also configure files extensions to save in priority and limit the size of simultaneously saved files in order to preserve your bandwidth.

This version also includes a new remote client interface to manage your backups remotely.

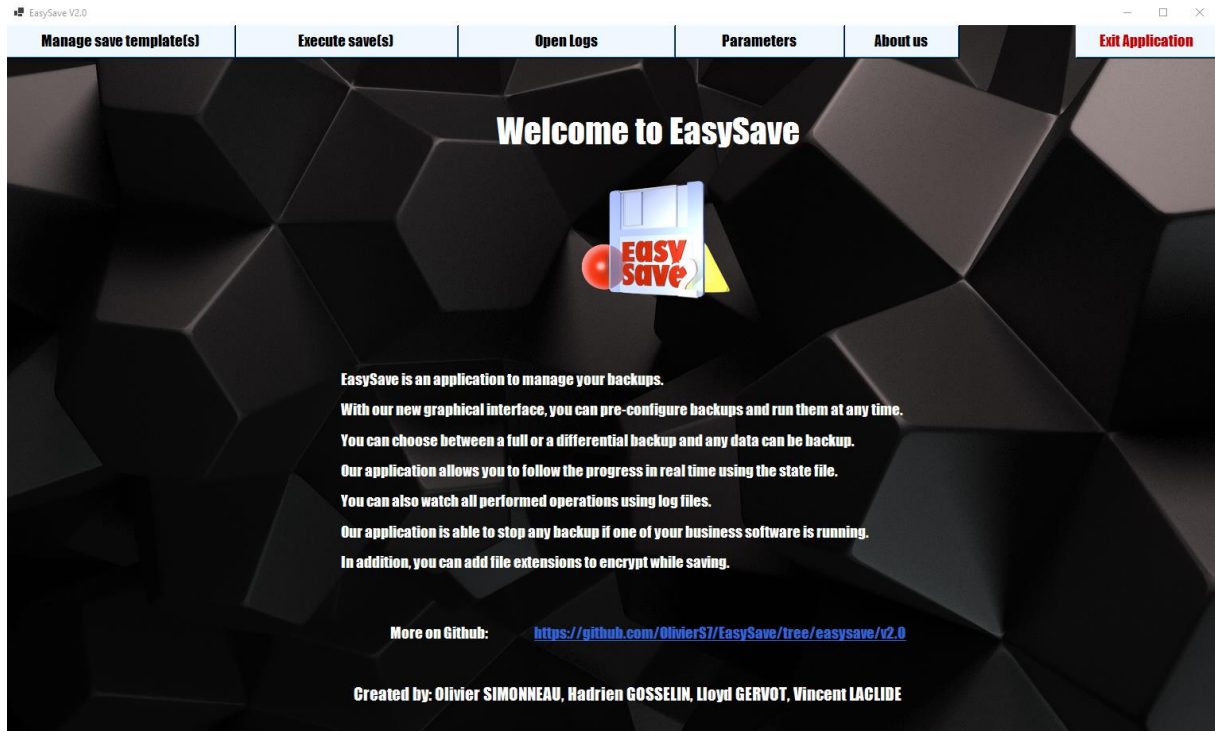
To use it, launch RemoteClient.exe which is going to open a graphical interface.

Read the steps described below to know how the software works.

# Menu

At the top of the window, all the menus are available. To navigate on the application, click on the different buttons.

Click on the “**About us**” button to come back to this menu.



All the different menus content will be described in the different parts of this document.

You can change the language in the parameters menu. Actually, three languages are available: English, French and Korean.

You can also open the logs file with the “**Open Logs**” button at any moment.

Exit the application when you want with the “**Exit Application**” button or the cross of the window.

# Manage save templates

In this menu, 3 options are available, to select the wanted one, click on it.



## Create a save template

*Open the menu to create a new save template.*

## Delete a save template

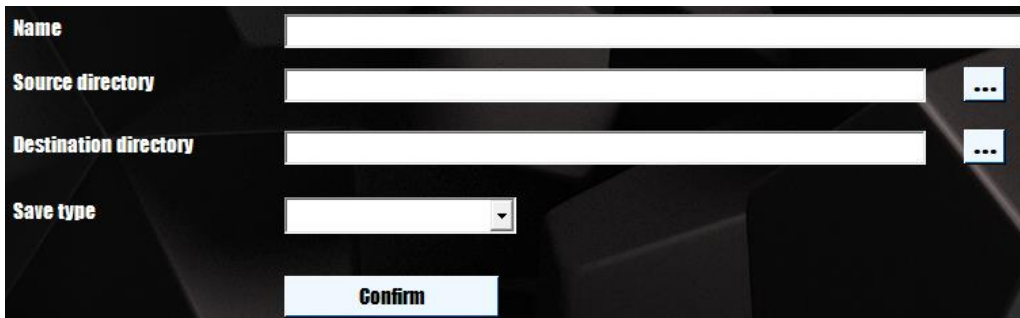
*Open the menu to delete an existing save template.*

## Modify a save template

*Open the menu to modify an existing save template.*

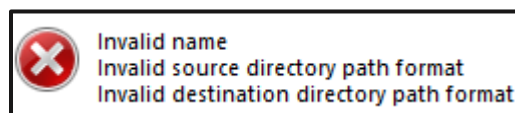
## Create a save template

When you want to create a save template, a new menu appears.



- **Enter the name of your template.**  
**Warning:** don't use the following characters `"/":*?\\<>|`
- **Enter the source directory path then the destination directory path.** You can find your wanted repositories by clicking on `"..."` button and browse in the file explorer.  
**Warning:** the directories paths must respect usual path format, if you're not sure, select it with the `"..."` button.
- **Then, select the save type you want to execute.**
- **Click on "Confirm"**

A message will be displayed if the information's format is incorrect.



## Delete a save template

This menu appears when you want to delete a save template.

A list of your configured template(s) will be displayed, select the template you want to delete, then click on “**Confirm**”.

Id	Backup Name	Source Directory	Destination Directory	Backup Type
1	test1	C:\Users\vlaci\Documents\test	C:\Users\vlaci\Documents\dest	Full
2	test	C:\Users\vlaci\Documents\test	C:\Users\vlaci\Documents\dest	Full
3	test3	C:\Users\vlaci\Documents\test	C:\Users\vlaci\Documents\dest	Full
4	test11111	C:\Users\vlaci\Documents\test	C:\Users\vlaci\Documents\dest	Full
5	test8	C:\Users\vlaci\Documents\test	C:\Users\vlaci\Documents\dest	Full

Confirm

## Modify a save templates

This is the option to modify an existing save template.

First, all the templates you have created before will appears. Select the one you want to modify.

Id	Backup Name	Source Directory	Destination Directory	Backup Type
1	test1	C:\Users\vlaci\Documents\test	C:\Users\vlaci\Documents\dest	Full
2	test	C:\Users\vlaci\Documents\test	C:\Users\vlaci\Documents\dest	Full
3	test3	C:\Users\vlaci\Documents\test	C:\Users\vlaci\Documents\dest	Full
4	test11111	C:\Users\vlaci\Documents\test	C:\Users\vlaci\Documents\dest	Full
5	test8	C:\Users\vlaci\Documents\test	C:\Users\vlaci\Documents\dest	Full

Name

Source directory  ...

Destination directory  ...

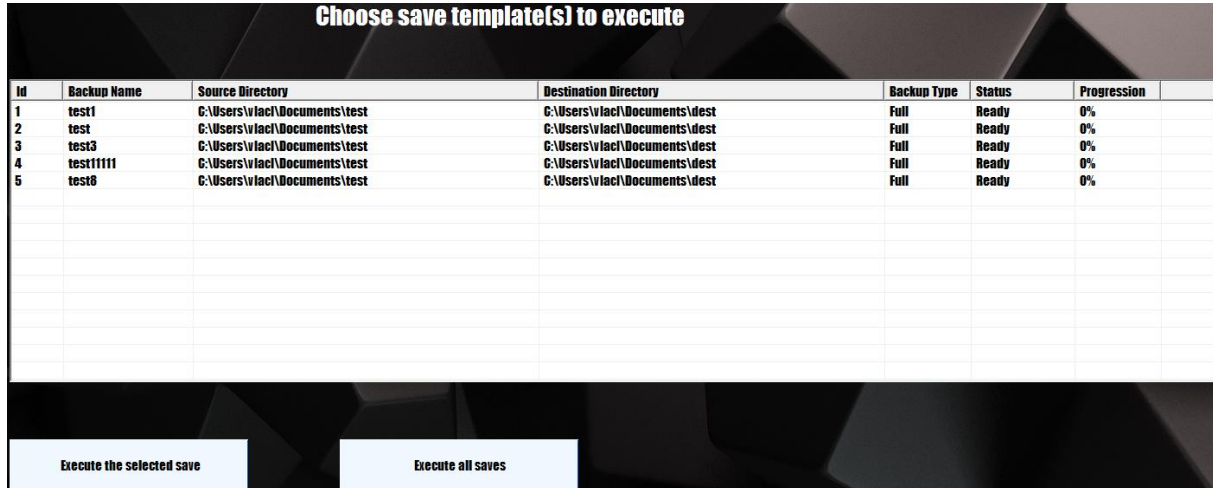
Save type

Confirm

Then, enter the new parameters. If you want to keep a parameter as it is, do not modify it. Click on “**Confirm**”

# Execute save(s)

When you want to execute one save template or all sequentially, a new menu appears with 2 available options and actions on saves.



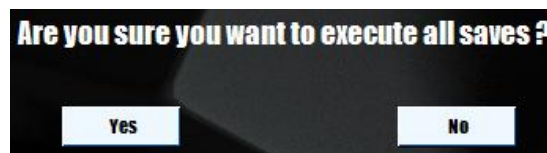
- 1) **Execute the selected save**  
*Execute one specific you have selected on the list.*
- 2) **Execute all templates**  
*Execute all templates displayed on the list.*

## Execute one template

Select the save template you want to execute, then click on **“Execute the selected save”** and the backup will start.

## Execute all templates

To execute all your templates sequentially, click on **“Execute all saves”**. If you really want to execute all templates sequentially (one after the other) click on **“Yes”**, otherwise click on **“No”**.



**Warning:** Before executing a differential save, you need to have done a full backup with the same source directory.

*N.B : You can check advancement and status of the saves with the **“Progression”** and **“Status”** fields.*

## Actions on saves

When a backup is in progress you can control it in 3 ways :



Select a save and click on **“Abort”** to stop it and delete all files already saved by this backup. The status will change to **“Aborted”** and the progression return to **“0%”**.

Id	Backup Name	Source Directory	Destination Directory	Backup Type	Status	Progression	
1	test	C:\Users\vlac\Documents\test	C:\Users\vlac\Documents\dest	Full	Aborted	0%	

Select a save and click on **“Pause”** to Suspend it and continue later. The status the status will change to **“Waiting”**.

Id	Backup Name	Source Directory	Destination Directory	Backup Type	Status	Progression	
1	test	C:\Users\vlac\Documents\test	C:\Users\vlac\Documents\dest	Full	Waiting	81%	

Select a save with the status **“Waiting”** and click on **“Play”** to resume it. The status the status will change to **“Running”**.

Id	Backup Name	Source Directory	Destination Directory	Backup Type	Status	Progression	
1	test	C:\Users\vlac\Documents\test	C:\Users\vlac\Documents\dest	Full	Running	67%	



# Parameters

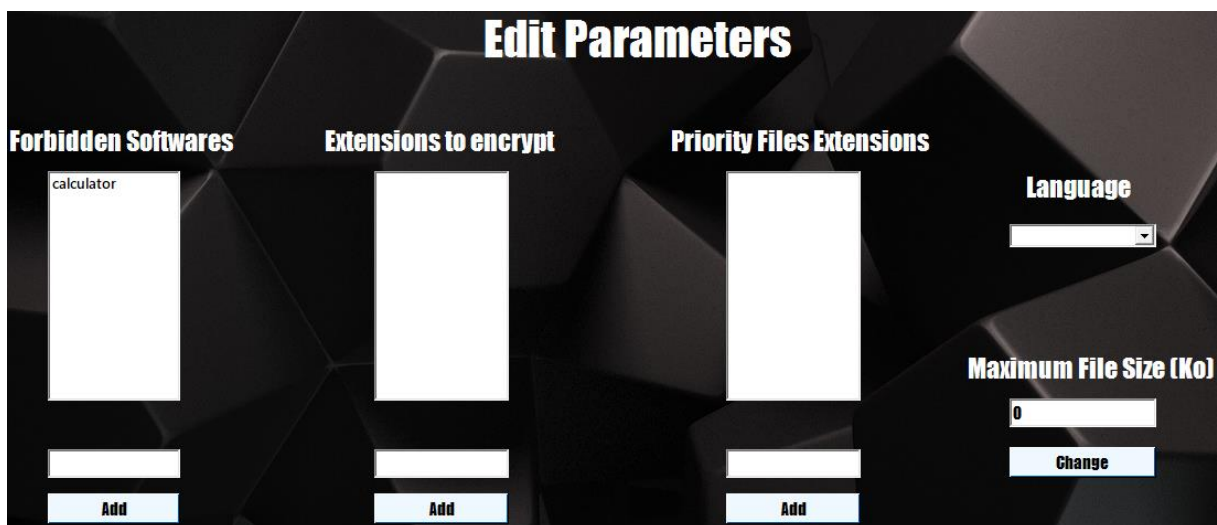
In this menu you can choose which software are going to block the execution of a save and which extensions files you want to encrypt.

Now, you can also configure files extensions to save the priority files extensions and limit the size of files saved simultaneously in order to preserve your bandwidth.

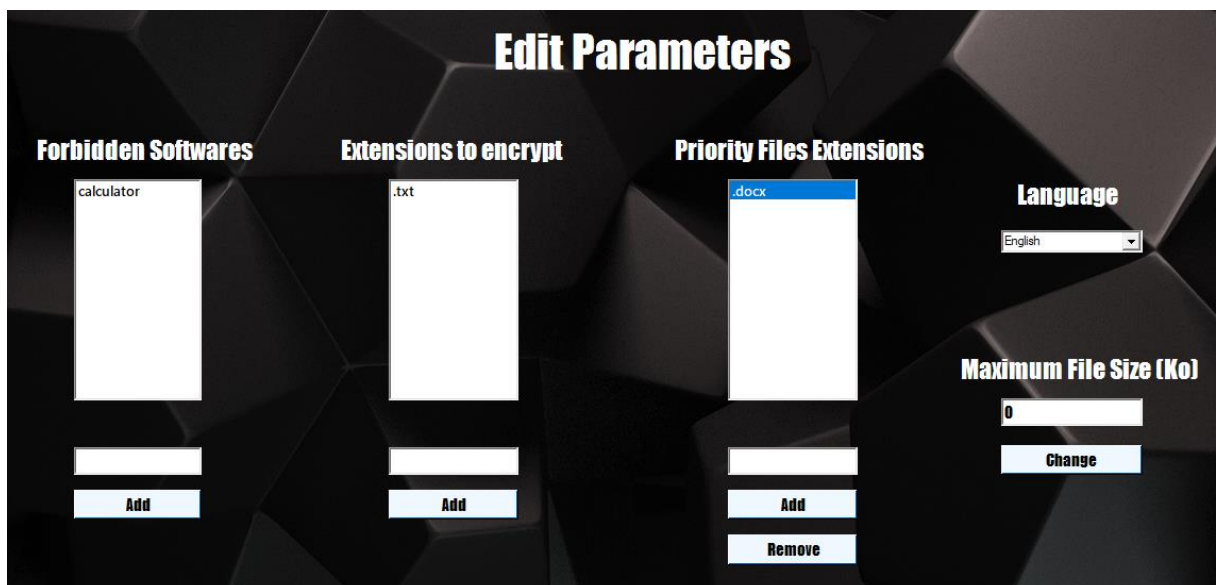
You can change the language of the program too.

To modify parameters, write on the box the software or the extension you want to add and click on **“Add”**.

For the maximum file size, enter the size you want (in Kilo bytes) and click on **“Change”**.



To remove a parameter, select it and click on **“Remove”**.



# Remote client interface

To execute your templates and check their status and advancement where and when you want, you need to launch the remote client interface.



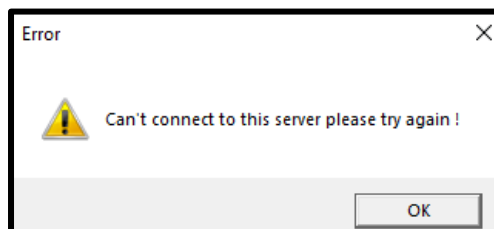
The screenshot shows a window titled "Form1" with three buttons at the top: "Execute template(s)", "Connection", and "Exit Application". The main area contains two prompts: "Please enter ip address of the remote server" with a text box containing "127.0.0.1", and "Please enter port of the remote server" with a text box containing "1234". A "Connection" button is located at the bottom center.

You can exit the application when you want with the “**Exit Application**” button or the cross of the window.

At the launch of the program, you have to enter the ip address and the port of the server to recover save templates stored on it. It means that you need to know the ip address of the server (**127.0.0.1** by default) and the port he’s using to communicate with this interface (**1234** by default).

Obviously, the server needs to be launched.

If the connection informations are incorrect, a message will be displayed :





# **Enjoy Backups with EasySave V3.0 !**